

YOU ARE CORDIALLY INVITED TO ATTEND 2009 Nebraska - South Dakota Exchange



WINNER, SOUTH DAKOTA

Friday, April 24, 2009

Hosted by Roseland Chapter No. 113

Winner Masonic Hall, Hwy 18, 1 block south of Court House



Friday

- 2:30-4:30 P.M.** Nebraska Grand Officers Practice at Masonic Hall
- 4:30 P.M.** Nebraska Grand Officers and Roseland Chapter Officers practice exchange of officers
- 5:00 P.M.** Arrival of South Dakota Grand Officers
- 5:30 P.M.** **Banquet**—Winner Masonic Hall. Cost is \$8.00 each. (Make check payable to Marlene Frantz) Money must be sent with reservations to: Marlene Frantz W.M. 31678 Memory Lane, Winner SD 57580. Deadline for reservations is April 10, 2009.
- 7:00 P.M.** **Meeting** at Winner Masonic Hall opened by members of Roseland Chapter with **Ceremony of Initiation given by Nebraska Grand Officers.**
- Lodging:** **Holiday Inn Express**, 1360 E Hwy 44, Winner, SD (605-842-2255) You must make your own reservations. Please mention that you are with the OES group. Cut off date for reservations is April 10, 2009. \$79.00 + tax, includes full hot breakfast. Other hotels available: Warrior Inn: 605-842-3121; Buffalo Trail: 605-842-2212

Contact Person: Marlene Frantz, WM 605-842-1522
jmftz@goldenwest.net



VALENTINE, NEBRASKA

Saturday, April 25, 2009

Hosted by Minnehaha Chapter No. 246

Valentine Masonic Hall, 3rd and Hall Street, Valentine



Saturday

- 9:00-11:00 A.M.** South Dakota Grand Officers Practice at Masonic Hall
- 11:00 A.M.** South Dakota Grand Officers and Minnehaha Chapter Officers practice exchange of officers
- 11:30 A.M.** Arrival of Nebraska Grand Officers.
- 12 Noon** **Lunch**—Valentine Masonic Hall. Cost is \$8.00 each. (Make check payable to Carol Luther) Money must be sent with reservations to: Carol Luther Secretary, PO Box 148, Kilgore NE 69216. Deadline for Reservations is April 18, 2009.
- 1:30 P.M.** **Meeting** at Valentine Masonic Hall opened by officers of Minnehaha Chapter with **Ceremony of Initiation given by South Dakota Grand Officers.**
- Lodging:** No rooms are being held.
Hotels Available: Holiday Inn Express, 803 HWY 20, Valentine, Nebraska (402-376-3000); Comfort Inn, 101 Main Street (402-376-3300)

Contact Person: Carol Luther, PGM, Secretary 402-966-2851
lutherbillcarol@gpcom.net

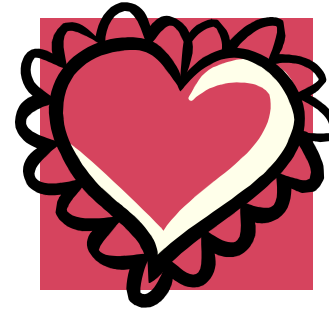


Tripp County Court House

Winner South Dakota

Welcome to Winner! Located in south central South Dakota along Highways 18, 183 and 44, Winner is the county seat of Tripp County. With a population of 3,137, the city covers approximately 922.5 acres and is 1,920 ft. above sea level. Winner was part of the famous Louisiana Purchase of 1803 and later part of the Dakota Territory. Winner was so named because it was the "winner" in the struggle to establish a town along the railroad right-of-way when the Chicago North Western began moving west from Dallas, SD in 1909.

Winner is a good place to do business having the best utility rates in the state. Over 300 businesses are active in the Winner community. The Winner School district is rated level 1 by the South Dakota Division of Education. Winner is home to a Regional Healthcare Center and two modern assisted living centers. Recent capital improvements in the city include a new main street, a new 4,500 ft. concrete runway at the airport, and a new Fire Hall / Ambulance building facility with training room.



Valentine Nebraska Heart City

A Place unlike anything you've seen. We are located in north central Nebraska and are the center of a diverse region of quiet lakes, grassy sand hills, secluded waterfalls, a national forest, two national wildlife refuges, big ranches with real cowboys, and one of the ten best canoeing rivers in the United States. We also have more than 200,000 acres of public land with some of the best hunting and fishing you'll find anywhere.

With 2,820 residents, Valentine is the metropolis of Cherry County. Though larger than Connecticut, our county is home to only about 6,000 people. Traditionally, "frontier" was defined as a place with fewer than six people per square mile, but Cherry County isn't nearly that crowded. Even with all those folks living in Valentine, we still average only one person per square mile. So, there is plenty of room for visitors. We have numerous lodging options, including guest ranches that offer horseback riding and fishing.